

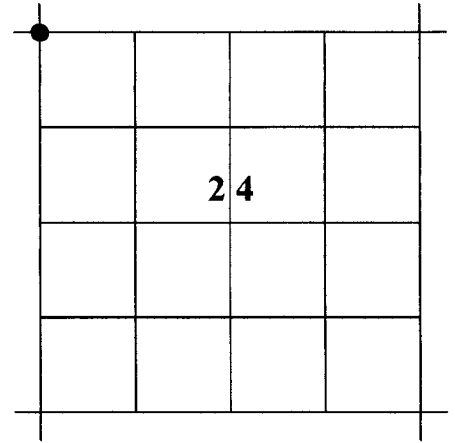
CORNER RESTORATION

CORNER: NW CORNER SEC. 24 TWP. 13 S. RANGE 26 E., W.M.

ORIGINAL SURVEY BY: Jason Owen

CONTRACT NUMBER: 194

CONTRACT DATE: July 1, 1873



ORIGINAL DESCRIPTION: Set Stone 20x13x8 for cor to Secs 13, 14, 23 & 24

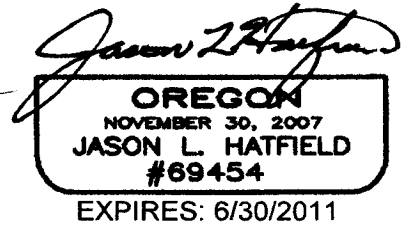
RESTORATION BY, STAMP AND DATE:

J.L. Hatfield, PLS
M.C. Springer, PLS
Sarah M. Sanders

RECEIVED AND
FILED

May 26, 2010
OFFICE OF COUNTY SURVEYOR

ATTEST:



May 7, 2010

Deputy Grant County Surveyor

EVIDENCE FOUND: Found a basalt stone, 20"x12"x8" marked with 3 grooves on one face, with no other stones. The stone was laying with the marks face up, which would be properly oriented when stone is stood upright. I accept the marked stone for the position of this section corner.

DESCRIPTION OF MONUMENT AND ACCESSORIES:

At the corner point, I set a 5/8"x15" iron pin 15" into solid bedrock, with attached 2" diameter aluminum cap, marked as shown below. Deposited original marked stone east and alongside iron pin. Built a 3 foot mound of stone to the top of the cap.

From which, I **SCRIBE THE FOLLOWING BEARING TREES:**

- ▶ A juniper, 10" diameter, bears S.02°W., 97.70 ft., marked T13S R26E S23 CSBT.
- ▶ A juniper, 8" diameter, bears N.76°W., 62.49 ft., marked S14 BT.

I also **SET THE FOLLOWING REFERENCE POINTS:**

- ▶ A 5/8"x30" iron pin bears N.60°42'E., 27.20 ft., with attached 1½" aluminum cap marked GRANT COUNTY SURVEYOR RP 1 2010
- ▶ A 5/8"x30" iron pin bears S.47°55'E., 39.77 ft., with attached 1½" aluminum cap marked GRANT COUNTY SURVEYOR RP 2 2010

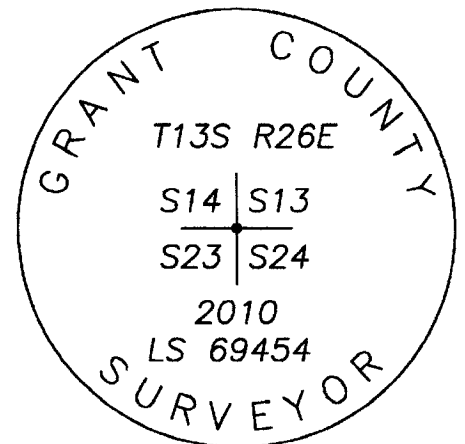
STATE PLANE COORDINATES (3601 OR N)

Reference Datum: NAD83

Northing: 280,803.1 ft.

Easting: 8,449,662.9 ft.

Ellip. Ht: 2,903.9 ft.



Used RTK GPS to measure the RP's. Used a Total Station to measure distances to the BT's, measuring to a 50d nail driven in the side-center at the root crown of the trees. Attached BT tags to the trees. Bearings are based on Geodetic North taken by GPS observation at the corner.